

GLACIER EZ-FIT SYSTEM

SALES TOOL



PHANTEKS

CONTENTS

03	INTRODUCTION
04	AVAILABLE PRODUCTS
07	SPECIFICATIONS
14	SHIPPING INFO
15	PRICING / SKU



INTRODUCTION

THE NEW WATER COOLING FROM PHANTEKS

At Phanteks, we strive to bring innovation to the enthusiast PC market. The Glacier EZ-Fit water cooling system brings a new way to cool your system that is easy to use, flexible to design your own loop and brings the highest level of performance.

Separate fittings and complicated shopping lists are now a thing of the past. Instead, the fittings are integrated into the cooling components and even lets you combine hard tube and soft tube in the same loop!

All Glacier EZ-Fit components are made using the best copper, acrylic and aluminum materials using CNC machines for ultimate precision and performance.

Glacier EZ-Fit key features:

- Fittings are integrated into the blocks, radiators and reservoirs
- 16mm Hard tubing and soft tubing can be used interchangeably
- No more complicated shopping list for multiple types of fittings
- Made from the best materials: 100% Copper, Cast Acrylic, rigid Aluminum Alloys
- Precision CNC-machined in our own Phanteks CNC facility

Current Glacier EZ-Fit Products:

- | | |
|-------------------------------------|--|
| • Glacier EZ-Fit 360 D30-KIT | Complete water cooling kit with D30 fans |
| • Glacier EZ-Fit 360 SOFT-KIT | Soft tube water cooling kit |
| • Glacier EZ-Fit 450CPU | High performance CPU block |
| • Glacier EZ-Fit 140RES-D5 | Versatile D5 reservoir |
| • Glacier EZ-Fit 120RES-DDC Body | Versatile DDC reservoir |
| • Glacier EZ-FIT G40 ASUS GPU Block | ASUS GeForce RTX 4000 series GPU block |
| • Glacier EZ-Fit 360RAD-30 | Slim copper radiator |
| • Glacier EZ-Fit 16 Hard Tube | Impact resistant PMMA hard tube |
| • Glacier EZ-Fit 16 PVC Tube | Flexible and kink-resistand soft tube |
| • Glacier EZ-Fit TOOL SET | Bending tools for 16mm hard tube |
| • Glacier EZ-Fit F16GI/4 | Universal GI/4 fitting |



AVAILABLE PRODUCTS



EZ-FIT 360 D30-KIT BLACK
COMPLETE KIT

Model No:	PH-GEF_KIT360-D30_DBK
UPC Code:	886523702030
MSRP:	\$499.99 €499.90 £439.90
Scope of Delivery:	
EZ-Fit 360RAD-30 Black	1x
EZ-Fit 450CPU Black	1x
EZ-Fit 140RES-D5 Black	1x
EZ-Fit 16 PVC Tube Clear	1x
EZ-Fit 16 HI-PMMA Tube Frosted	4x
D30-120 regular Triple Pack Black	1x
EZ-Fit Tool Set	1x



EZ-FIT 360 D30-KIT WHITE
COMPLETE KIT

Model No:	PH-GEF_KIT360-D30_DWT
UPC Code:	886523702047
MSRP:	\$499.99 €499.90 £439.90
Scope of Delivery:	
EZ-Fit 360RAD-30 White	1x
EZ-Fit 450CPU White	1x
EZ-Fit 140RES-D5 White	1x
EZ-Fit 16 PVC Tube Clear	1x
EZ-Fit 16 HI-PMMA Tube Frosted	4x
D30-120 regular Triple Pack White	1x
EZ-Fit Tool Set	1x



EZ-FIT 360 SOFT-KIT BLACK
SOFT KIT

Model No:	PH-GEF_KIT360-ST_DBK
UPC Code:	886523702016
MSRP:	\$399.99 €399.90 £349.90
Scope of Delivery:	
EZ-Fit 360RAD-30 Black	1x
EZ-Fit 450CPU Black	1x
EZ-Fit 140RES-D5 Black	1x
EZ-Fit 16 PVC Tube Clear	1x
EZ-Fit Tool Set	1x



EZ-FIT 360 SOFT-KIT WHITE
SOFT KIT

Model No:	PH-GEF_KIT360-ST_DWT
UPC Code:	886523702023
MSRP:	\$399.99 €399.90 £349.90
Scope of Delivery:	
EZ-Fit 360RAD-30 White	1x
EZ-Fit 450CPU White	1x
EZ-Fit 140RES-D5 White	1x
EZ-Fit 16 PVC Tube Clear	1x
EZ-Fit Tool Set	1x

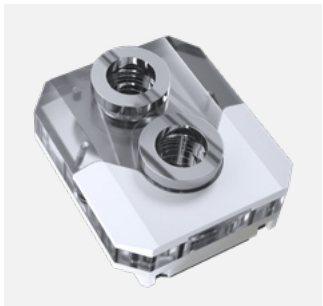
AVAILABLE PRODUCTS

CPU BLOCKS



EZ-FIT 450CPU BLACK
CPU BLOCK

Model No:	PH-GEF_CPU450_DBK
UPC Code:	886523702054
MSRP:	\$99.99 €99.90 £86.90



EZ-FIT 450CPU WHITE
CPU BLOCK

Model No:	PH-GEF_CPU450_DWT
UPC Code:	886523702061
MSRP:	\$99.99 €99.90 £86.90

RADIATORS



EZ-FIT 360RAD-30 BLACK
360 RADIATOR

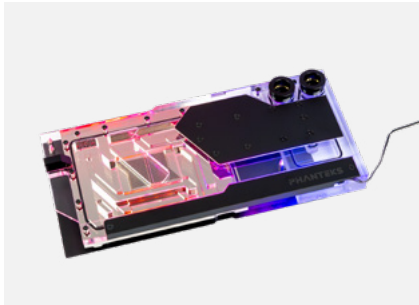
Model No:	PH-GEF_RAD363_BK01
UPC Code:	886523702078
MSRP:	\$99.99 €99.90 £86.90



EZ-FIT 360RAD-30 WHITE
360 RADIATOR

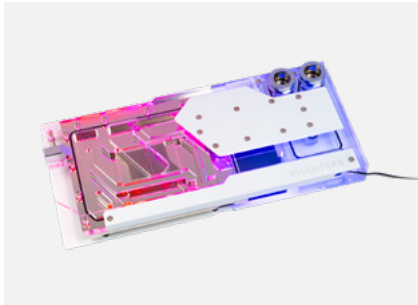
Model No:	PH-GEF_RAD363_WT01
UPC Code:	886523702085
MSRP:	\$99.99 €99.90 £86.90

GPU BLOCKS



GLACIER EZ-FIT G40 ASUS GPU BLOCK BLACK
GPU BLOCK

Model No:	PH-GEF_GPU4090AS_DBK01
UPC Code:	88652303211
MSRP:	\$249.99 €249.90 £219.90



GLACIER EZ-FIT G40 ASUS GPU BLOCK WHITE
GPU BLOCK

Model No:	PH-GEF_GPU4090AS_DMW01
UPC Code:	886523703228
MSRP:	\$269.99 €269.90 £234.90

AVAILABLE PRODUCTS

RESERVOIRS



EZ-FIT 140RES-D5 BLACK
COMBO COMPACT RESERVOIR

Model No:	PH-GEF_RES140_DBK
UPC Code:	886523702092
MSRP:	\$229.99 €229.90 £199.90



EZ-FIT 140RES-D5 WHITE
COMBO COMPACT RESERVOIR

Model No:	PH-GEF_RES140_DWT
UPC Code:	886523703013
MSRP:	\$229.99 €229.90 £199.90



EZ-FIT 120RES-DDC BODY BLACK
COMPACT RESERVOIR FOR DDC PUMP

Model No:	PH-GEF_RES120-B_DBK01
UPC Code:	886523703303
MSRP:	\$119.99 €119.90 £104.90



EZ-FIT 120RES-DDC BODY WHITE
COMPACT RESERVOIR FOR DDC PUMP

Model No:	PH-GEF_RES120-B_DWT01
UPC Code:	886523703310
MSRP:	\$119.99 €119.90 £104.90

TUBES



EZ-FIT 16 PVC TUBE CLEAR
SOFT TUBE

Model No:	PH-GEF_ST16_CL
UPC Code:	886523703020
MSRP:	\$12.99 €14.90 £12.90



EZ-FIT 16 HI-PMMA TUBE, FROSTED
HARD TUBE

Model No:	PH-GEF_HT16_FR
UPC Code:	886523703037
MSRP:	\$18.99 €18.90 £16.99

FITTINGS



EZ-FIT F16G1/4, BLACK
FITTING

Model No:	PH-GEF_F16G_BK
UPC Code:	886523703044
MSRP:	\$6.99 €7.90 £6.90



EZ-FIT F16G1/4, CHROME
FITTING

Model No:	PH-GEF_F16G_CR
UPC Code:	886523703051
MSRP:	\$7.99 €7.90 £6.90

TOOLS

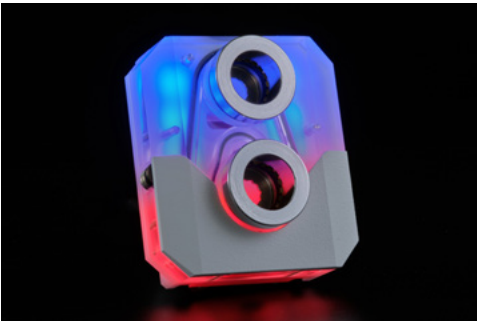


EZ-FIT TOOL SET
COMPLETE TOOL SET

Model No:	PH-GEF_TLS_BK
UPC Code:	886523703068
MSRP:	\$24.99 €24.90 £21.90

SPECIFICATIONS

GLACIER EZ-FIT 450CPU (PH-GEF_CPU450_DBK / PH-GEF_CPU450_DWT)



The Glacier EZ-Fit 450CPU block features two integrated 16mm fittings that allow you to start building your cooling loop right away. Its 100% copper base is engineered with an expansive surface area and an innovative micro fin array with fins measuring just 0.15mm, maximizing heat dissipation for exceptional cooling performance.

This CPU block is equipped with a fully metal mounting system, complete with two springs that automatically adjust to provide balanced pressure on the CPU. This ensures optimal contact for stable and reliable performance, making it the perfect choice for high-demand gaming and overclocking scenarios.

Key Features:

- Integrated 16mm EZ-Fit Fittings: Pre-installed fittings for both hard and soft tubing, enabling quick and hassle-free setup—no extra fittings required.
- Precision Copper Base: High-performance copper base with an ultra-fine 0.15mm fin array provides maximum surface area for superior heat dissipation and efficient cooling.
- Auto-Balancing Mounting System: Fully metal construction with automatic pressure-balancing springs ensures even pressure on the CPU for consistent and reliable performance.
- Enhanced D-RGB Lighting: The POM (Polyoxymethylene) body diffuses built-in D-RGB lighting, adding a sleek, modern aesthetic to your setup while ensuring durability.
- Intel I700 & AMD AM5 Compatible: Designed to work seamlessly with both Intel and AMD's latest platforms

Specifications

Type	CPU Block
Product Dimension	72 x 64 x 25.7 mm
Compatibility	LGA 1700 / AM4 / AM5
Color	Black or White
Copper Base Dimension	60.2 x 51 x 3.7 mm / 2.37 x 2 x 0.15 in
Fin Construction	0.15 mm
Materials	Acrylic / POM / Copper / Aluminum cover
Supported Tube Size	Hard Tube: OD 16mm Soft Tube: OD 16mm, ID 10mm
Tube Compatibility	Hard Tube: PETG, Acrylic tube Soft Tube: PVC tube
Number of LEDs	2x 5pcs

Scope of Delivery

Glacier EZ-Fit 450CPU	1x Glacier 4CPU Block 2x EZ-Fit F16 (Pre-installed) 3x Fitting inserts (for soft tube) 1x Aluminum Cover 2x Mounting Hardware (Screw, Spring) 1x Intel Backplate 1x PH-NDC Thermal Compound 2x D-RGB LED Strips (5pcs led) 1x D-RGB LED Cable 1x D-RGB MB Adapter 2x Intel mounting bracket 2x AMD mounting bracket 4x Thumb screw 4x Intel Standoff (I700) 4x AMD Standoff 1x Manual
-----------------------	--

SPECIFICATIONS

GLACIER EZ-FIT 360RAD-30 (PH-GEF_RAD363_BK01 / PH-GEF_RAD363_WT01)



The Glacier EZ-Fit 360RAD-30 is a slim 360 radiator. Its 30mm thickness makes it highly versatile for a wide array of chassis. The integrated fittings simplify your build, reducing the need for extra components while enhancing compatibility with both hard and soft tubing systems.

The core of the radiator is made from H90 copper tubing and pure copper fins with a density of 19 FPI. The outer steel frame ensures a rigid construction that protects the copper core for long lasting performance.

Key Features:

- Integrated 16mm EZ-Fit Fittings: Designed for both hard and soft tubing, eliminating the need for additional fittings. Quick and easy setup, saving you time and hassle.
- Premium Copper Construction: All-copper core featuring H90 copper tubing and pure copper fins ensures efficient heat dissipation for optimal cooling performance.
- High-Density Fin Design: With 19 FPI (Fins Per Inch), this radiator maximizes surface area, delivering superior cooling even under heavy loads.
- Durable & Rigid Frame: Built with a steel outer frame for long-lasting durability and structural integrity.
- Versatile Fan Compatibility: Standard M4 threads allow for seamless installation of 25mm and 30mm thick fans. Screws are included, making it convenient to install your preferred fans.

Specifications

Type	30mm Radiator
Product Dimension	410 x 123 x 30 mm
Materials	Copper / Stainless Steel
Color	Black or White
Screw Thread Size	M24x1
FPI	19
Fan Compatibility	120 mm
Supported Tube Size	Hard Tube: OD 16mm Soft Tube: OD 16mm, ID 10mm
Tube Compatibility	Hard Tube: PETG, Acrylic tube Soft Tube: PVC tube

Scope of Delivery

Glacier EZ-Fit 360RAD-30	1x 360 Radiator 30 2x EZ-Fit F16 (Pre-installed) 3x Fitting inserts (for soft tube) 12x M4x5 screws 12x M4x30 screws
--------------------------	--

SPECIFICATIONS

GLACIER EZ-FIT 140RES-D5 (PH-GEF_RES140_DBK / PH-GEF_RES140_DWT)

The Glacier EZ-Fit 140RES-D5 reservoir is designed for compact versatility, featuring a flexible mounting system that enables easy installation onto any fan in various orientations. The integrated fittings are strategically placed to offer maximum freedom in loop configuration, allowing you to customize your setup effortlessly.

At the heart of this reservoir is the powerful D5-Gen3 pump, seamlessly integrated into the robust acrylic body. Its transparent design showcases water flow from all angles, adding both functionality and a visually striking element to your build.

Key Features:

- **Integrated 16mm EZ-Fit Fittings:** Designed for both hard and soft tubing, these pre-installed fittings enable quick and hassle-free setup, allowing you to start building your custom loop immediately.
- **Powerful D5-Gen3 Pump:** The high-performance D5-Gen3 pump is seamlessly integrated into the acrylic body, delivering robust water flow and superior cooling efficiency for your system.
- **Versatile Port Locations:** Multiple port locations provide ultimate freedom in loop planning, allowing you to customize your setup for optimal performance and aesthetics.
- **Flexible Mounting System:** The super flexible mounting system allows for easy installation onto any fan in your system, ensuring a perfect fit in your build.
- **Integrated D-RGB Lighting:** The stunning D-RGB lighting, beautifully diffused behind the aluminum cover, adds a touch of style to your rig, enhancing its visual appeal.
- **Convenient Fill Port:** The conveniently located fill port at the top of the 240ml reservoir makes refilling and maintenance a breeze, keeping your system running smoothly.

Specifications	
Type	Combo Reservoir
Product Dimension	145 x 93 x 74 mm
Pump Compatibility	D5 Pump (Gen3 D5 Pump pre-installed)
Installation Compatibility	120/140 mm fan/radiator
Color	Black or White
Number of LEDs	7
Capacity	210 ml
Fill Port	1 x G 1/4
No. of Inlet	2 x M24
No. of Outlet	2 x M24
Materials	Acrylic / POM / Copper / Aluminum cover
Supported Tube Size	Hard Tube: OD 16mm
	Soft Tube: OD 16mm, ID 10mm
Tube Compatibility	Hard Tube: PETG, Acrylic tube
	Soft Tube: PVC tube
Scope of Delivery	

Glacier EZ-Fit 140RES-D5

1x Reservoir
3x Fitting inserts (for soft tube)
1x Mounting bracket
1x Gen3 D5 Pump (Pre-installed)
1x Stop Fitting G1/4 (Pre-installed)
2x Plug Fitting M24 (Pre-installed)
2x EZ-Fit F16 (Pre-installed)
2x M4x8mm bracket screws
2x Fan screws
1x D-RGB LED Strips (7pcs led)
1x D-RGB LED Cable
1x D-RGB MB Adapter
1x Manual

SPECIFICATIONS

GLACIER EZ-FIT 120RES-DDC BODY (PH-GEF_RES120-B_DBK / PH-GEF_RES120-B_DWT)

The Glacier EZ-Fit 120RES-DDC Body reservoir is designed for compact versatility, featuring a flexible mounting system that enables easy installation onto any fan in various orientations. With its exact 120 by 120mm size, it fits exactly into any 120mm fan position or onto any 120mm or 140mm fan in the system.

Key Features:

- **Integrated 16mm EZ-Fit Fittings:** Designed for both hard and soft tubing, these pre-installed fittings enable quick and hassle-free setup, allowing you to start building your custom loop immediately.
- **Designed for the powerful and compact DDC Pump:** The high-performance DDC pump is seamlessly integrated into the acrylic body, delivering robust water flow and superior cooling efficiency for your system.
- **Versatile Port Locations:** Multiple port locations provide ultimate freedom in loop planning, allowing you to customize your setup for optimal performance and aesthetics.
- **Flexible Mounting System with a 120x120mm size:** The super flexible mounting system allows for easy installation onto any fan in your system, ensuring a perfect fit in your build.
- **Integrated D-RGB Lighting:** The stunning D-RGB lighting, beautifully diffused behind the aluminum cover, adds a touch of style to your rig, enhancing its visual appeal.
- **Convenient Fill Port:** The conveniently located fill port at the top of the reservoir makes refilling and maintenance a breeze, keeping your system running smoothly.

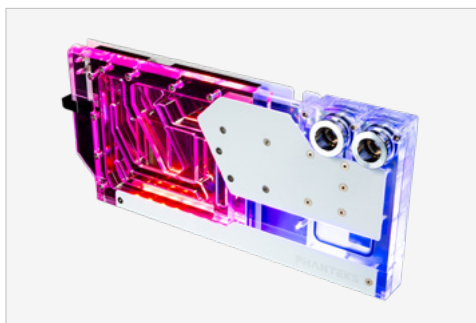
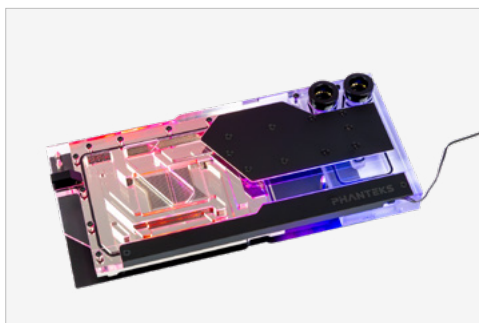
Specifications

Type	Reservoir
Product Dimension	45 x 120 x 124 mm
Pump Compatibility	DDC Pump, not included
Installation Compatibility	120/140 mm fan/radiator
Color	Black
Number of LEDs	10
Capacity	123 ml
Fill Port	1 x G 1/4
No. of Inlet	2 x M24
No. of Outlet	2 x M24
Materials	Acrylic / Aluminum cover
Supported Tube Size	Hard Tube: OD 16mm Soft Tube: OD 16mm, ID 10mm
Tube Compatibility	Hard Tube: PETG, Acrylic tube Soft Tube: PVC tube

Scope of Delivery

Glacier EZ-Fit 120RES-DDC	1x Reservoir 3x Fitting inserts (for soft tube) 1x Mounting bracket 1x Stop Fitting G1/4 (Pre-installed) 2x Plug Fitting M24 (Pre-installed) 2x EZ-Fit F16 (Pre-installed) 2x M4x8mm bracket screws 4x M4x10mm bracket screws 4x M4x25mm bracket screws 2x Fan screws 1x D-RGB LED Strips (10pcs led) 1x D-RGB LED Cable 1x D-RGB MB Adapter 1x 2.5mm Hex Key 1x 8mm Hex Key 1x Manual
----------------------------------	---

SPECIFICATIONS

GLACIER EZ-FIT G40 ASUS GPU BLOCK (PH-GEF_GPU4090AS_DBK01 / PH-GEF_GPU4090AS_DMW01)

Phanteks' Glacier EZ-FIT G40 ASUS GPU Block provides a high-performance water-cooling solution custom-designed for the latest ASUS GeForce RTX 4000 series cards. A clear acrylic jetplate positioned directly over the GPU die ensures optimal heat transfer. The backplate is included with all models to provide a clean integrated look while also providing additional cooling to the back of the PCB. In addition, the full cover copper cold plate directly cools all memory and power delivery components on the PCB with high quality thermal pads.

This model also introduces some new features, such as a new fitting location to allow for better tube routing, even in more compact chassis. To improve stability, a GPU support bracket is added to connect the water block to the rear PCI bracket, so the GPU is mounted more secure.

Key Features:

- Custom-designed for the ASUS ROG STRIX / TUF gaming RTX 4090 graphic cards
- Unlock the full potential of the RTX 4090 with high performance water cooling
- Milled from a 10mm pure copper block to directly cool all memory and power delivery components
- Fine 0.6mm fin array combined with a clear jetplate positioned directly over the GPU die ensures optimal heat transfer
- Viton Rubber Washer for retaining seal force and prevent leaks
- Low-profile fitting location for better chassis clearance and GPU Support Bracket to prevent sag
- Integrated Digital-RGB Lighting with standard JST connectors to allow for expansion and synchronization with all Phanteks D-RGB products and compatible motherboards with Addressable-RGB lighting

Specifications	
Type	GPU Block
Product Dimension	288 x 131 x 26 mm
Compatibility	ASUS ROG Strix GeForce RTX® 4090 24GB
	ASUS ROG Strix GeForce RTX® 4090 OC Edition 24GB
	ASUS TUF-RTX4090-O24G-GAMING
	ASUS TUF-RTX4090-24G-GAMING
Installation Compatibility	120/140 mm fan/radiator
Color	Black or White
Number of LEDs	15
Backplate Materials	Aluminum Covers / Mylar layer with 0.25mm thickness
Block Materials	Acrylic / Copper / Aluminum cover / EPDM / ED Black Brass / ABS
Supported Tube Size	Hard Tube: OD 16mm
	Soft Tube: OD 16mm, ID 10mm
Tube Compatibility	Hard Tube: PETG, Acrylic tube
	Soft Tube: PVC tube

Scope of Delivery

Glacier EZ-Fit 140RES-D5	1x PH-GEF_GPU4090AS_DBK01 water-block
	1x PH-NDC thermal compound
	2x Push-in Fitting
	2x Acrylic Plug Fitting
	3x Fitting Insert (for soft tube)
	1x Digital RGB LED (for GPU Block Pre-installed)
	1x D-RGB LED Cable (for Phanteks Case)
	1x D-RGB Motherboard Adapter
	2x Thermal Pad (pre-cut)
	4x M2.5x5 screws & washers
	1x Support bracket (Anodized)
	1x M3x10 screw
	1x PH-GB4090ASBP_BK01 Aluminum backplate
	2x Thermal Pad (pre-cut)
	8x M2.5x8 screws
	2x M2.5x6 screws
	1x 8mm Allen Key
	1x PH-GEF_GPU4090AS_DBK01 installation guide

SPECIFICATIONS

GLACIER EZ-FIT 16 HI-PMMA TUBE (PH-GEF_HT16_FR)



The High-Impact PMMA tubing combines the best of both worlds. It is easy to work with like PETG tubing while being as clear and reliable as traditional PMMA tubing.

Key Features:

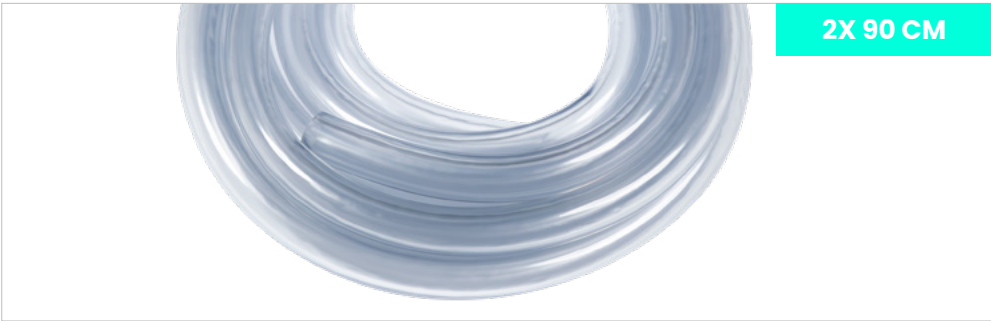
- Shatter-Resistant Material: Made from high-impact PMMA, these tubes provide superior durability and resistance to breakage, ensuring a reliable cooling solution.
- User-Friendly Cutting: Easily cut to your desired length using standard tube cutters, allowing for customization to fit any build configuration.
- High-Temperature Resistance: Engineered to withstand high temperatures, these tubes offer maximum reliability and longevity for your water-cooling loop.
- Stylish Frosted Finish: The frosted matte look adds a unique touch to your setup, making your cooling loop stand out with a professional aesthetic.
- Complete Set: Includes two 90cm length hard tubes, providing everything you need for your custom water-cooling installation.

Specifications	
Type	Hard Tube
Materials	HI-PMMA
Color	Frosted
Length	2x 90 cm
Operating temperature range	<=60°C
Internal diameter	12 mm
Outer diameter	16 mm

Scope of Delivery	
Glacier EZ-Fit 16 HI-PMMA Tube	2x PH-GEF_HT16_FR

SPECIFICATIONS

GLACIER EZ-FIT 16 PVC TUBE CLEAR (PH-GEF_ST16_CL)



Enhance your custom water-cooling setup with the Glacier EZ-Fit 16 PVC Tube. This high-quality clear soft tubing is designed to provide optimal performance and flexibility for any enthusiast PC build.

Key Features:

- Premium Transparent Design: High-quality PVC offers a crystal-clear finish to showcase your water-cooling loop.
- Smooth Inner Walls: Prevents bacterial adhesion for clean, efficient coolant flow.
- Generous Length: 3 meters of tubing provides ample length for customization.
- Perfect Dimensions: Inner diameter of 3/8" (10mm) and outer diameter of 5/8" (16mm) ensures compatibility with various fittings.

Specifications	
Type	Soft Tube
Materials	PVC
Color	Clear
Length	3 meter
Operating temperature range	<=50°C
Internal diameter	10 mm
Outer diameter	16 mm

Scope of Delivery	
Glacier EZ-Fit 16 PVC Tube	1x PH-GEF_ST16_CL

SPECIFICATIONS

GLACIER EZ-FIT F16G1/4 FITTING (PH-GEF_F16G_BK / PH-GEF_F16G_CR)



Specifications	
Type	Fitting
Product Dimension	Ø26.2 x 23.3 mm
Materials	Brass
Color	Black or Chrome
Screw Thread	G1/4"
Thread Length	5 mm
Outer diameter	26.2 mm
Supported Tube Size	Hard Tube: OD 16mm Soft Tube: OD 16mm, ID 10mm
Tube Compatibility	Hard Tube: PETG, Acrylic tube Soft Tube: PVC tube

Scope of Delivery	
Glacier EZ-Fit F16G1/4	1x PH-GEF_F16G

GLACIER EZ-FIT TOOL SET (PH-GEF_TLS_BK)



Specifications	
Type	Tool Set
Materials	Tube Cutter: Plastic + Steel Bending Insert: Rubber Bending Guides: PP Squeeze Bottle: PE 24-Pin Jumper: PP Sandpaper: Paper
Compatibility	ID 12mm OD 16mm Hard Tube

Scope of Delivery	
Glacier EZ-Fit Tool Set	1x Tube Cutter 1x Bending Insert 1x Bending Guides (set) 1x Squeeze Bottle 1x 24-Pin Jumper 1x Sandpaper 1x Manual

SHIPPING INFORMATION

PACKAGING	Glacier EZ-Fit 450CPU	Glacier EZ-Fit 360RAD-30	Glacier EZ-Fit 140RES-D5	Glacier EZ-Fit 120RES-DDC	Glacier EZ-Fit 16 HI-PMMA Tube	Glacier EZ-Fit 16 PVC Tube Clear
PACKAGE DIMENSION	150 x 145 x 69 mm	465 x 140 x 40 mm	210 x 138 x 103 mm	coming soon	930 x 39 x21 mm	270 x 370 x 1 mm
NET WEIGHT	196 g	807 g	890 g	612 g	89 g	475 g
GROSS WEIGHT	530 g	967 g	1160 g	883 g	264 g	476 g
OUTER CARTON	Glacier EZ-Fit 450CPU	Glacier EZ-Fit 360RAD-30	Glacier EZ-Fit 140RES-D5	Glacier EZ-Fit 120RES-DDC	Glacier EZ-Fit 16 HI-PMMA Tube	Glacier EZ-Fit 16 PVC Tube Clear
CARTON DIMENSION	321 x 312 x 242 mm	475 x 450 x 300 mm	442 x 303 x 236 mm	coming soon	955 x 228 x 132 mm	288 x 421 x 210 mm
CARTON WEIGHT	6.92 kg	21.86 kg	10.08 kg	coming soon	7.19 kg	5.38 kg
PIECES PER CARTON	12	20	8	coming soon	25	10
PACKAGING	Glacier EZ-Fit F16G1/4 Fitting	Glacier EZ-Fit Tool Set	Glacier EZ-Fit 360 D30-KIT	Glacier EZ-Fit 360 SOFT-KIT		
PACKAGE DIMENSION	88 x 120 x 25 mm	210 x 138 x 103 mm	228 x 132 x 955 mm	560 x 221 x 160 mm		
NET WEIGHT	36 g	-	-	-		
GROSS WEIGHT	39 g	520 g	5669 g	3897 g		
OUTER CARTON	Glacier EZ-Fit F16G1/4 Fitting	Glacier EZ-Fit Tool Set	Glacier EZ-Fit 360 D30-KIT	Glacier EZ-Fit 360 SOFT-KIT		
CARTON DIMENSION	238 x 108 x 175 mm	442 x 303 x 236 mm	978 x 242 x 412 mm	578 x 236 x 512 mm		
CARTON WEIGHT	1.36 kg	4.63 kg	19.06 kg	12.63 kg		
PIECES PER CARTON	30	8	3	3		

PRICING | SKU

PRODUCT	USD	EUR	GBP	MODEL NO.	UPC
Phanteeks Glacier EZ-Fit 360 D30-KIT Black	\$499.99	€499.90	£439.90	PH-GEF_KIT360-D30_DBK	886523702030
Phanteeks Glacier EZ-Fit 360 D30-KIT White	\$499.99	€499.90	£439.90	PH-GEF_KIT360-D30_DWT	886523702047
Phanteeks Glacier EZ-Fit 360 SOFT-KIT Black	\$399.99	€399.90	£349.90	PH-GEF_KIT360-ST_DBK	886523702016
Phanteeks Glacier EZ-Fit 360 SOFT-KIT White	\$399.99	€399.90	£349.90	PH-GEF_KIT360-ST_DWT	886523702023
Phanteeks Glacier CPU Black	\$99.99	€99.90	£86.90	PH-GEF_CPU450_DBK	886523702054
Phanteeks Glacier CPU White	\$99.99	€99.90	£86.90	PH-GEF_CPU450_DWT	886523702061
Phanteeks Glacier EZ-Fit 360RAD-30 Black	\$99.99	€99.90	£86.90	PH-GEF_RAD363_BK01	886523702078
Phanteeks Glacier EZ-Fit 360RAD-30 White	\$99.99	€99.90	£86.90	PH-GEF_RAD363_WT01	886523702085
Phanteeks Glacier EZ-FIT G40 ASUS GPU Block Black	\$249.99	€249.90	£219.90	PH-GEF_GPU4090AS_DBK01	886523703211
Phanteeks Glacier EZ-FIT G40 ASUS GPU Block White	\$269.99	€269.90	£234.90	PH-GEF_GPU4090AS_DMW01	886523703228
Phanteeks Glacier EZ-Fit 120RES-DDC Body Black	\$119.99	€119.90	£104.90	PH-GEF_RES120-B_DBK01	886523703303
Phanteeks Glacier EZ-Fit 120RES-DDC Body White	\$119.99	€119.90	£104.90	PH-GEF_RES120-B_DWT01	886523703310
Phanteeks Glacier EZ-Fit 140RES-D5 Black	\$229.99	€229.90	£199.90	PH-GEF_RES140_DBK	886523702092
Phanteeks Glacier EZ-Fit 140RES-D5 White	\$229.99	€229.90	£199.90	PH-GEF_RES140_DWT	886523703013
Phanteeks Glacier EZ-Fit 16 PVC Tube Clear	\$12.99	€14.90	£12.90	PH-GEF_ST16_CL	886523703020
Phanteeks Glacier EZ-Fit 16 HI-PMMA Tube Frosted	\$18.99	€18.90	£16.99	PH-GEF_HT16_FR	886523703037
Phanteeks Glacier EZ-Fit F16G1/4 Black	\$6.99	€7.90	£6.90	PH-GEF_F16G_BK	886523703044
Phanteeks Glacier EZ-Fit F16G1/4 Chrome	\$7.99	€7.90	£6.90	PH-GEF_F16G_CR	886523703051
Phanteeks Glacier EZ-Fit Tool Set	\$24.99	€24.90	£21.90	PH-GEF_TLS_BK	886523703068

PHANTEKS

sales@phanteks.com

www.phanteks.com